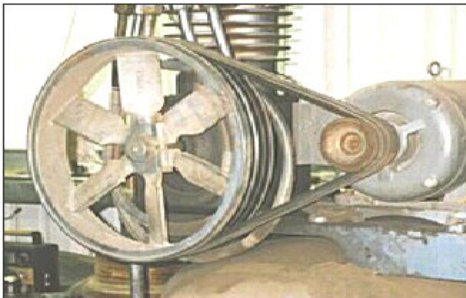


Machine Guards

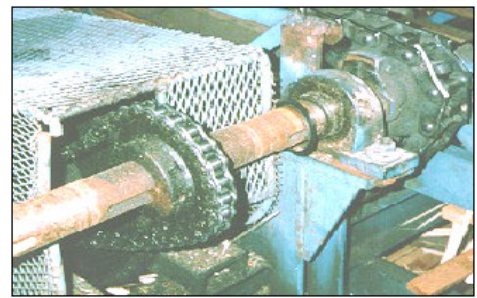
DANGER



Flywheels and Belts

If it moves, pay attention!

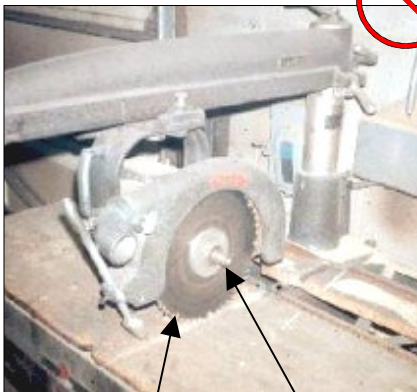
DANGER



Chains and Sprockets

RADIAL SAWS

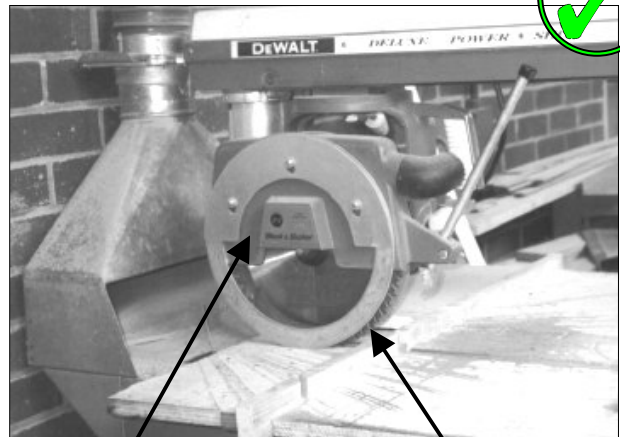
No



The LOWER BLADE is NOT GUARDED.

SPINDLE END, FLANGE, and NUT are NOT COVERED.

Yes



The SPINDLE END, FLANGE, and NUT are GUARDED with a metal plate.

The LOWER BLADE is GUARDED with a self-adjusting floating guard that rises and falls automatically to the thickness of the stock.

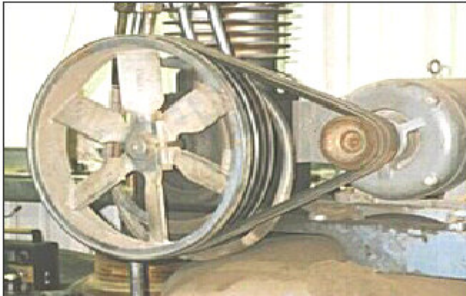
If you don't know a machine and its dangers, don't use it.

Ask your supervisor to show you how to use the machine.

SAFETY FIRST!

Resguardos de Máquinas

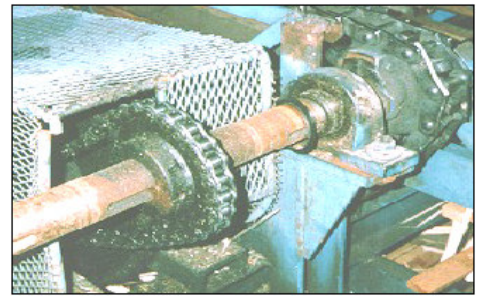
PELIGRO



Ruedas Volantes y Bandas

¡Si se mueve,
ponga atención!

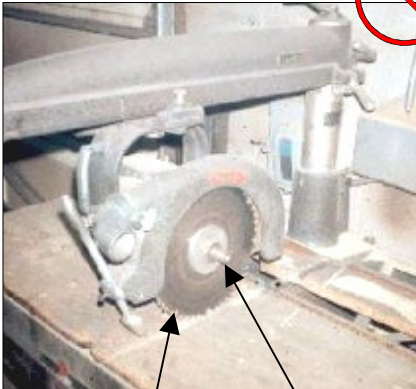
PELIGRO



Cadenas y Ruedas Dentadas

SIERRAS RADIALES

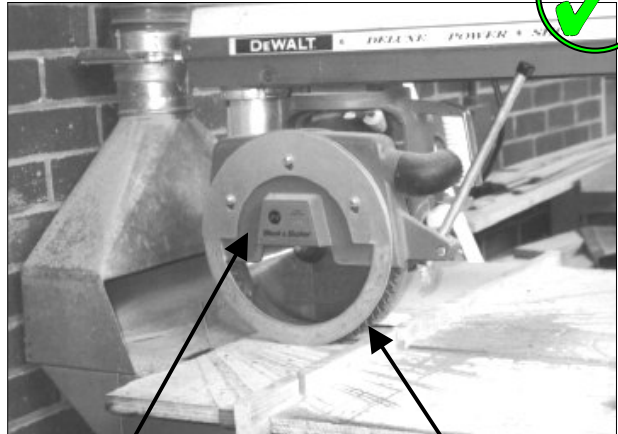
No



LA SIERRA
INFERIOR NO esta
RESGUARDADA.

La PUNTA DEL
EJE, PESTAÑA,
y TUERCA
están al abierto.

Sí



La PUNTA DEL EJE,
PESTAÑA, y TUERCA
están resguardadas con
un placa de metal.

LA SIERRA
INFERIOR ESTA
RESGUARDADA con
una guarda flotador
que sube y cae
automáticamente con
el gruesor de la pieza.

Si no conoce una máquina y sus peligros, no la use.

Pregúntele a su supervisor que le enseñe como usar la máquina.

¡PRIMERO LA SEGURIDAD!